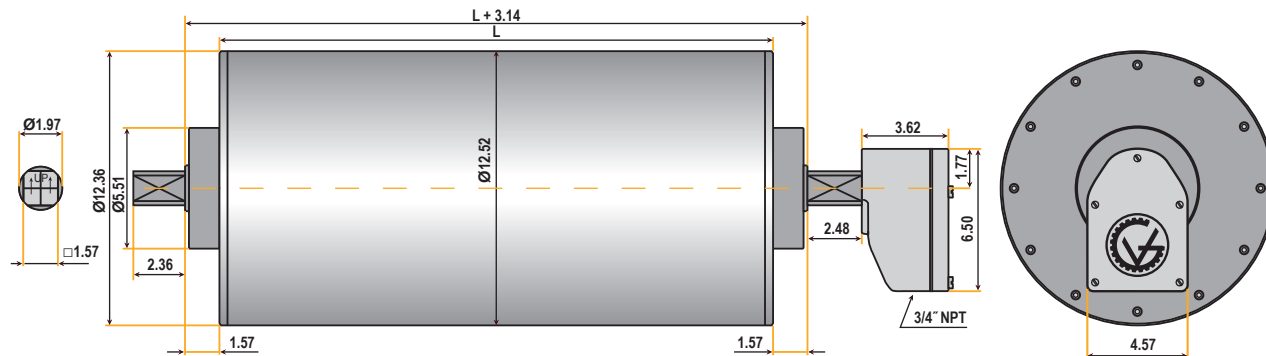


TM315 SERIES

(12.5" diameter)

DIMENSIONS (in inches)

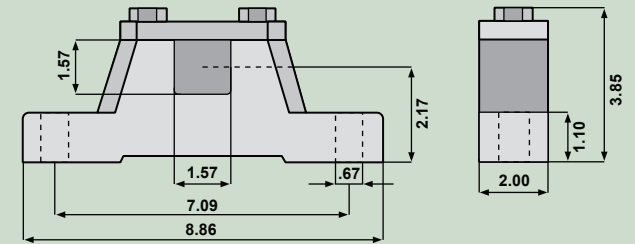
TM315A50 Drum Motor (matching Idler KT315A50**)



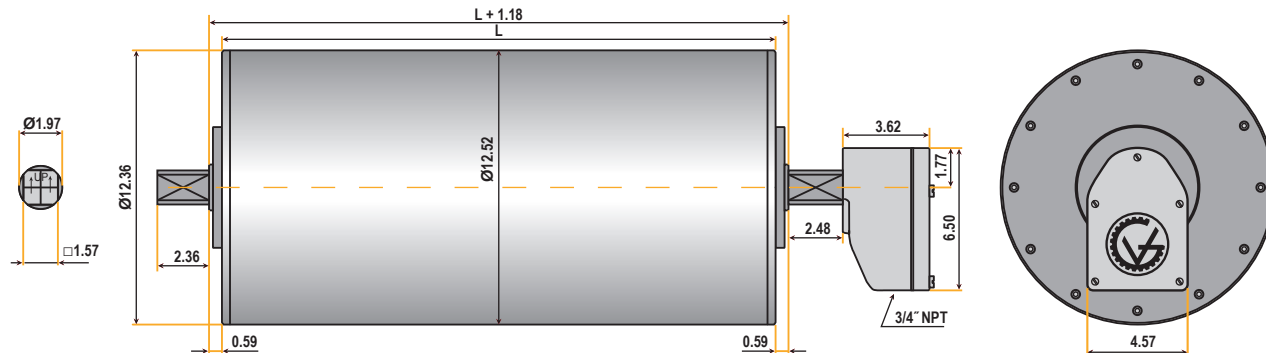
Standard face widths* (L) in inches:

| | | | | | | | | |
|-------|-------|-------|-------|-------|-------|-------|-------|-------|
| 19.69 | 21.65 | 23.62 | 25.59 | 27.56 | 29.53 | 31.50 | 33.46 | 35.43 |
| 37.40 | 39.37 | 41.34 | 43.31 | 45.28 | 47.24 | 49.21 | 51.18 | 53.15 |
| 55.12 | | | | | | | | |

Bracket AB 50



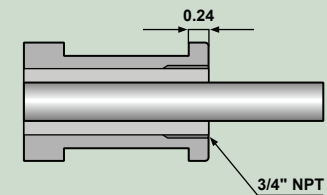
TM315B50 Drum Motor (matching Idler KT315B50**)



Standard face widths* (L) in inches:

| | | | | | | | | |
|-------|-------|-------|-------|-------|-------|-------|-------|-------|
| 21.65 | 23.62 | 25.59 | 27.56 | 29.53 | 31.50 | 33.46 | 35.43 | 37.40 |
| 39.37 | 41.34 | 43.31 | 45.28 | 47.24 | 49.21 | 51.18 | 53.15 | 55.12 |

Optional Cable Type



Note: When Optional Cable Type is selected, the minimum face width (L) increases by 1.969 inches.

*Some face widths are not available in all horsepower. For minimum available face widths refer to TM315 Specifications.

**Idler dimensions are identical to the drum motor with no junction box.