

6 poles - 1000/1200 rpm

	Description					Mechanical specifications								Electrical specifications					
	Code	Type	SIZE	SB	II2D Temp. class	Static moment* kgmm		Centrifugal force				Weight kg		Max input power W		Max. current A		Ia/In	
						50 Hz	60 Hz	50 Hz	60 Hz	50 Hz	60 Hz	50 Hz	60 Hz	50 Hz	60 Hz	400 V 50 Hz	460 V 60 Hz	50 Hz	60 Hz
	three-phase																		
602296	MVSI 10/40-S02	10	•	120°C	30.1	30.1	35.0	49.0	0.331	0.476	9.70	9.70	120	135	0.30	0.30	1.90	2.07	
602297	MVSI 10/100-S02	10	•	120°C	84.2	84.2	94.3	136	0.925	1.33	12.5	12.5	120	135	0.30	0.30	1.90	2.07	
602298	MVSI 10/200-S02	20	•	120°C	163	163	183	264	1.80	2.59	19.0	19.0	185	205	0.50	0.50	2.72	3.10	
602314	MVSI 10/310-S02	30	•	120°C	286	209	321	338	3.15	3.32	23.5	22.2	350	380	0.72	0.68	2.63	2.79	
602150	MVSI 10/550-S90	35	•	120°C	457	457	512	737	5.02	7.23	36.5	36.5	350	380	0.75	0.68	2.53	3.68	
602161	MVSI 10/810-S02	40	•	135°C	723	561	809	905	7.94	8.88	54.0	50.0	680	760	1.40	1.35	2.79	3.33	
602162	MVSI 10/1110-S90	50	•	135°C	1012	715	1132	1151	11.1	11.3	64.0	57.0	750	750	1.65	1.50	3.33	4.13	
602228	MVSI 10/1400-S90	50	•	170°C	1274	904	1424	1483	14.0	14.5	78.0	71.0	950	1000	1.80	1.70	3.05	3.65	
602165	MVSI 10/1610-S02	60	•	135°C	1464	962	1638	1549	16.1	15.2	93.0	81.0	1100	1300	2.20	2.20	4.21	4.05	
602229	MVSI 10/2100-S02	60	•	200°C	1927	1318	2154	2102	21.1	20.6	101	92.0	1500	1770	3.00	2.75	3.42	4.00	
602167	MVSI 10/2610-S02	70	•	135°C	2326	1720	2601	2747	25.5	26.9	130	116	1960	2100	4.10	3.75	5.35	5.60	
602230	MVSI 10/3000-S02	70	•	135°C	2690	1940	3007	3124	29.5	30.6	145	130	2200	2400	4.50	4.30	4.35	4.81	
602154	MVSI 10/3810-S02	80	•	135°C	3422	2380	3826	3831	37.5	37.6	188	170	2500	3000	5.10	5.00	5.91	6.00	
602204	MVSI 10/4700-S02	80	•	135°C	4206	2887	4701	4648	46.1	46.0	204	183	3200	3600	6.50	6.00	5.24	5.50	
602138	MVSI 10/5200-S02	90	•	135°C	4658	3288	5208	5293	51.1	51.9	238	215	3800	4000	7.00	6.50	4.71	5.08	
602091	MVSI 10/6500-S02	90	•	135°C	5838	4055	6527	6529	64.0	64.0	268	258	4300	5000	8.20	8.10	4.51	5.83	
602136	MVSI 10/6600-S02 ▲	97	□	135°C	6083	3979	6799	6405	66.7	62.8	285	257	5000	5900	10.0	9.80	5.61	5.82	
602092	MVSI 10/8000-S90	95	□	135°C	7197	4967	8046	7996	78.9	78.4	315	277	7000	7500	12.6	11.3	4.59	5.58	
602093	MVSI 10/9000-S90	95	□	135°C	7752	5385	8666	8669	85.0	85.0	326	289	7500	8200	14.0	12.9	4.13	4.88	
602137	MVSI 10/10000-S02	97	□	135°C	8673	5664	9695	9117	95.1	89.4	381	340	7600	8000	13.5	12.4	4.72	4.92	
602134	MVSI 10/12000-S90 ▲	100	□	135°C	10996	7543	12294	12141	119	119	500	445	9000	9500	16.3	15.0	5.21	5.73	
602227	MVSI 10/13000-S02	97	□	135°C	11510	8158	12867	13130	126	129	420	382	9600	10000	17.0	16.0	4.98	5.00	
602142	MVSI 10/15000-S90 ▲	105	□	135°C	12662	8700	14155	14004	139	137	643	605	10600	11270	19.0	18.0	5.88	5.78	
602143	MVSI 10/17500-S90	105	□	135°C	15500	10439	17327	16804	170	165	705	656	13000	13700	24.5	23.0	5.71	5.96	
602244	MVSI 10/19500-S90	105	□	135°C	17947	-	20062	-	197	-	711	-	14000	-	25.5	-	5.49	-	
602144	MVSI 10/22000-S90	110	□	135°C	20025	12533	22386	20208	220	198	926	896	19000	19000	33.0	25.5	4.67	5.88	
602273	MVSI 10/25000-S90	110	□	135°C	22364	-	25000	-	245	-	960	-	19000	-	33.0	-	4.67	-	

* Working moment = 2 x static moment. ▲ For special application. □ CSA certification on request, with feeding line included. Ia/In = ratio between start-up current and maximum current.

6 poles - 1000/1200 rpm

Type	Dimensional specifications (mm)														
	Fig.	A	B	C	D	E	Holes		F	H	I	L	M	N	Cable entry thread
							øG	N°							
three-phase MVSI 10/40-S02	A	255	179	152	90	125	13	4	28	73	54	127	128	141	M20x1,5
MVSI 10/100-S02	A	301	179	152	90	125	13	4	28	73	77	127	128	141	M20x1,5
MVSI 10/200-S02	A	344	203	167	105	140	13	4	30	82.5	93	145	140	160	M25x1,5
MVSI 10/310-S02	A	394	216	205	120	170	17	4	45	93.5	106	170	160	182	M25x1,5
MVSI 10/550-S90	A	435	233	205	120	170	17	4	54	104.5	117.5	187	162	203	M25x1,5
MVSI 10/810-S90	A	500 (50Hz) 448 (60Hz)	246	230	140	190	17	4	54	116	134 (50Hz) 108 (60Hz)	210	180	225	M25x1,5
MVSI 10/1110-S90	A	574 (50Hz) 500 (60Hz)	246	230	140	190	17	4	54	116	171 (50Hz) 134 (60Hz)	210	180	225	M25x1,5
MVSI 10/1400-S90	A	574	246	230	140	190	17	4	54	116	171	210	180	225	M25x1,5
MVSI 10/1610-S02	A	617 (50Hz) 537 (60Hz)	278	275	155	225	22	4	70	135	177 (50Hz) 137 (60Hz)	238	205	253	M25x1,5
MVSI 10/2100-S02	A	617	278	275	155	225	22	4	70	135	177	238	205	253	M25x1,5
MVSI 10/2610-S02	A	666	321	310	155	255	23.5	4	77	157	178	277	215	295	M25x1,5
MVSI 10/3000-S02	A	706	321	310	155	255	23.5	4	77	157	198	277	215	295	M25x1,5
MVSI 10/3810-S02	A	734	347	340	180	280	26	4	80	165	202	303	240	320	M32x1,5
MVSI 10/4700-S02	A	796	347	340	180	280	26	4	80	165	233	303	240	320	M32x1,5
MVSI 10/5200-S02	A	744	370	390	200	320	28	4	90	180	192	330	270	350	M32x1,5
MVSI 10/6500-S02	A	840	370	390	200	320	28	4	90	180	240	330	270	350	M32x1,5
MVSI 10/6600-S02 ^Δ	C	750	437	460	125	380	38	6	35	215	174	387	320	414	M32x1,5
MVSI 10/8000-S90	A	870	395	392	200	320	28	4	100	192	255	355	270	375	M32x1,5
MVSI 10/9000-S90	A	870	395	392	200	320	28	4	100	192	255	355	270	375	M32x1,5
MVSI 10/10000-S02	C	862	437	460	125	380	38	6	35	215	230	387	320	414	M32x1,5
MVSI 10/12000-S90 ^Δ	C	990	454	530	140	440	45	6	38	230	240	423	370	448	M32x1,5
MVSI 10/13000-S02	C	1002	437	460	125	380	38	6	35	215	300	387	320	414	M32x1,5
MVSI 10/15000-S90 ^Δ	F	960	526	570	140	480	45	8	41	268	200	485	510	516	M32x1,5
MVSI 10/17500-S90	F	1040	526	570	140	480	45	8	41	268	240	485	510	516	M32x1,5
MVSI 10/19500-S90	F	1120	526	570	140	480	45	8	41	268	280	485	510	516	M32x1,5
MVSI 10/22000-S90	F	1150	607	610	140	520	45	8	38	297	297.5	542	510	582	M32x1,5
MVSI 10/25000-S90	F	1150	607	610	140	520	45	8	38	297	297.5	542	510	582	M32x1,5

^Δ For special application.

Fig. A

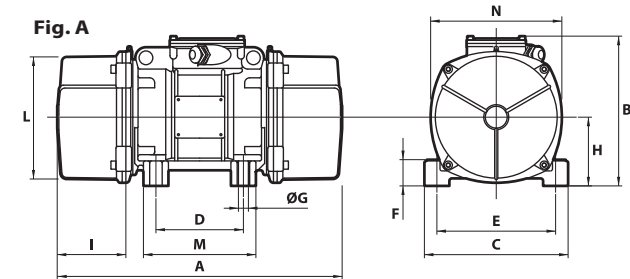


Fig. C

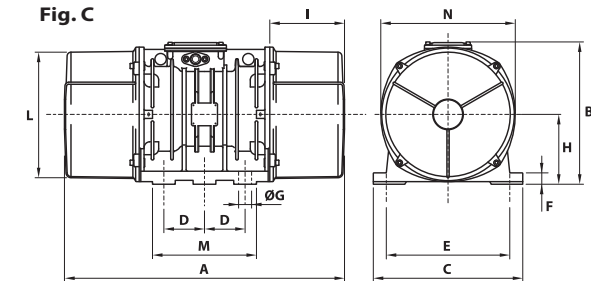


Fig. F

