

4 poles - 1500/1800 rpm

| | Description | | | | | Mechanical specifications | | | | | | | | Electrical specifications | | | | | |
|--------------|-------------------|------------------|------|-------|------------------|---------------------------|-------|-------------------|-------|-------|-------|--------------|-------|---------------------------|-------|-------------------|----------------|-------|-------|
| | Code | Type | SIZE | SF | IIZD Temp. class | Static moment* kgmm | | Centrifugal force | | | | Weight kg | | Max input power W | | Max. current A | | Ia/In | |
| | | | | | | 50 Hz | 60 Hz | 50 Hz | 60 Hz | 50 Hz | 60 Hz | 50 Hz | 60 Hz | 50 Hz | 60 Hz | 400 V 50 Hz | 460 V 60 Hz | 50 Hz | 60 Hz |
| three-phase | 601340 | MVSI 15/35-S02 | 00 | • | 120°C | 12.0 | 12.0 | 30.2 | 43.5 | 0.30 | 0.43 | 5.60 | 5.60 | 85 | 95 | 0.21 | 0.20 | 1.78 | 1.95 |
| | 601341 | MVSI 15/80-S02 | 01 | • | 120°C | 31.0 | 21.0 | 77.9 | 76.1 | 0.76 | 0.75 | 6.70 | 6.40 | 85 | 95 | 0.21 | 0.20 | 1.78 | 1.95 |
| | 601366 | MVSI 15/100-S02 | 01 | • | 120°C | 38.9 | 31.0 | 97.9 | 112 | 0.96 | 1.10 | 7.10 | 6.70 | 85 | 95 | 0.21 | 0.20 | 1.78 | 1.95 |
| | 601367 | MVSI 15/200-S02 | 10 | • | 120°C | 84.2 | 58.8 | 213 | 214 | 2.09 | 2.10 | 12.5 | 11.7 | 170 | 170 | 0.41 | 0.40 | 2.34 | 2.75 |
| | 601372 | MVSI 15/400-S02 | 20 | • | 120°C | 163 | 113 | 412 | 411 | 4.04 | 4.03 | 19.0 | 18.2 | 300 | 350 | 0.60 | 0.60 | 3.33 | 3.50 |
| | 601373 | MVSI 15/550-S02 | 20 | • | 120°C | 219 | 163 | 552 | 592 | 5.42 | 5.81 | 20.4 | 19.0 | 300 | 350 | 0.60 | 0.60 | 3.33 | 3.50 |
| | 601408 | MVSI 15/700-S02 | 30 | • | 120°C | 286 | 209 | 720 | 760 | 7.06 | 7.46 | 23.5 | 22.2 | 525 | 665 | 0.92 | 0.98 | 3.48 | 3.43 |
| | 601201 | MVSI 15/1100-S90 | 35 | • | 120°C | 415 | 271 | 1045 | 982 | 10.3 | 9.63 | 35.0 | 30.5 | 550 | 680 | 0.95 | 0.95 | 4.45 | 4.89 |
| | 601217 | MVSI 15/1410-S90 | 40 | • | 120°C | 561 | 400 | 1413 | 1449 | 13.9 | 14.2 | 53.0 | 50.0 | 900 | 1050 | 1.45 | 1.50 | 4.10 | 4.20 |
| | 601219 | MVSI 15/1710-S90 | 50 | • | 150°C | 715 | 485 | 1798 | 1757 | 17.6 | 17.2 | 57.0 | 54.5 | 1100 | 1200 | 2.00 | 1.90 | 4.29 | 4.89 |
| | 601267 | MVSI 15/2000-S90 | 50 | • | 170°C | 817 | 561 | 2054 | 2033 | 20.1 | 19.9 | 61.5 | 57.5 | 1350 | 1450 | 2.50 | 2.30 | 4.30 | 4.90 |
| | 601220 | MVSI 15/2410-S02 | 60 | • | 150°C | 962 | 674 | 2420 | 2444 | 23.7 | 24.0 | 81.0 | 76.0 | 1600 | 1700 | 3.20 | 3.00 | 6.09 | 7.23 |
| | 601268 | MVSI 15/3000-S02 | 60 | • | 135°C | 1235 | 858 | 3106 | 3107 | 30.5 | 30.5 | 90.0 | 83.5 | 1900 | 2000 | 3.80 | 3.50 | 6.50 | 7.50 |
| | 601221 | MVSI 15/3810-S02 | 70 | • | 135°C | 1526 | 1034 | 3840 | 3744 | 37.7 | 36.7 | 119 | 110 | 2200 | 2500 | 3.90 | 3.90 | 7.11 | 6.92 |
| | 601269 | MVSI 15/4300-S02 | 70 | • | 135°C | 1720 | 1173 | 4326 | 4250 | 42.4 | 41.7 | 123 | 117 | 2500 | 2800 | 4.80 | 4.65 | 5.90 | 7.10 |
| | 601211 | MVSI 15/5010-S02 | 80 | • | 135°C | 1990 | 1364 | 5007 | 4941 | 49.1 | 48.5 | 161 | 153 | 3600 | 3400 | 6.00 | 5.00 | 7.02 | 8.00 |
| | 601165 | MVSI 15/7000-S02 | 90 | • | 135°C | 2598 | 1822 | 6536 | 6600 | 64.1 | 64.7 | 208 | 195 | 6000 | 6000 | 10.5 | 9.00 | 6.48 | 7.67 |
| | 601166 | MVSI 15/9000-S90 | 95 | □ | 135°C | 3260 | 2260 | 8199 | 8183 | 80.4 | 80.3 | 225 | 210 | 7000 | 8000 | 11.6 | 11.5 | 5.43 | 5.57 |
| 601204 | MVSI 15/9500-S02 | 97 | □ | 135°C | 3346 | 2462 | 8416 | 8916 | 82.6 | 87.5 | 317 | 303 | 7500 | 8500 | 12.2 | 12.0 | 6.56 | 6.67 | |
| 601205 | MVSI 15/11500-S90 | 100 | □ | 135°C | 4544 | 3166 | 11430 | 11467 | 112 | 112 | 433 | 411 | 10000 | 10500 | 17.5 | 15.5 | 7.03 | 8.00 | |
| 601271 | MVSI 15/14500-S90 | 100 | □ | 135°C | 5614 | 4126 | 14120 | 14940 | 138 | 147 | 458 | 424 | 11000 | 12000 | 20.0 | 20.0 | 8.00 | 8.00 | |
| single-phase | 601340 | MVSI 15/35-S02 | 00 | • | 120°C | 12.0 | 12.0 | 30.2 | 43.5 | 0.30 | 0.43 | 5.60 | 5.60 | 90 | 100 | 0.43 | 1.00 | 1.20 | 1.30 |
| | 601341 | MVSI 15/80-S02 | 01 | • | 120°C | 31.0 | 21.0 | 77.9 | 76.1 | 0.76 | 0.75 | 6.70 | 6.40 | 90 | 100 | 0.43 | 1.00 | 1.20 | 1.30 |
| | 601366 | MVSI 15/100-S02 | 01 | • | 120°C | 38.9 | 31.0 | 97.9 | 112 | 0.96 | 1.10 | 7.10 | 6.70 | 90 | 100 | 0.43 | 1.00 | 1.20 | 1.30 |
| | 601367 | MVSI 15/200-S02 | 10 | • | 120°C | 84.2 | 58.8 | 213 | 214 | 2.09 | 2.10 | 12.5 | 11.7 | 210 | 230 | 1.00 | 2.00 | 1.50 | 1.85 |
| | 601372 | MVSI 15/400-S02 | 20 | • | 120°C | 163 | 113 | 412 | 411 | 4.04 | 4.03 | 19.0 | 18.2 | 240 | 320 | 1.20 | 2.80 | 2.50 | 2.21 |
| | 601373 | MVSI 15/550-S02 | 20 | • | 120°C | 219 | 163 | 552 | 592 | 5.42 | 5.81 | 20.4 | 19.0 | 240 | 320 | 1.20 | 2.80 | 2.50 | 2.21 |
| | 601148 | MVSI 15/700-S90 | 30 | • | 120°C | 286 | 209 | 720 | 760 | 7.06 | 7.46 | 23.5 | 22.2 | 450 | 550 | 2.15 | 5.15 | 5.44 | 3.63 |

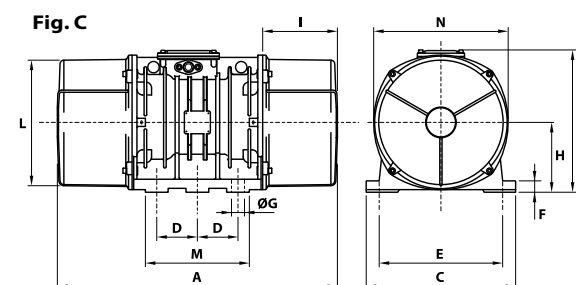
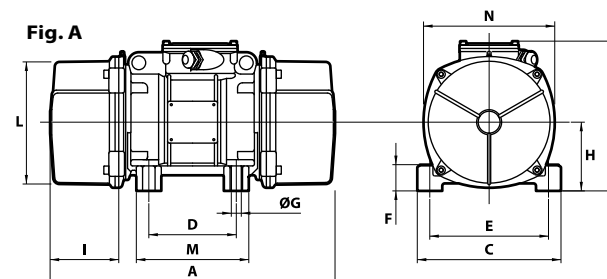
* Working moment = 2 x static moment.

□ CSA certification on request, with feeding line included.

Ia/In = ratio between start-up current and maximum current.

4 poles - 1500/1800 rpm

| | Type | Dimensional specifications (mm) | | | | | | | | | | | | | | Capacitor (µF) | | Cable entry thread |
|-------------------|-------------------|---------------------------------|--------------------------|-----|-----|---------|-----|-------|----|-----|-------|--------------------------|-----|-----|-----|----------------|-------------|--------------------|
| | | Fig. | A | B | C | D | E | Holes | | F | H | I | L | M | N | 220 V 50 Hz | 115 V 60 Hz | |
| | | | | | | | øG | N* | | | | | | | | | | |
| three-phase | MVSI 15/35-S02 | A | 211 | 153 | 125 | 62-74** | 106 | 9 | 4 | 24 | 61 | 46 | 103 | 100 | 117 | - | - | M20x1,5 |
| | MVSI 15/80-S02 | A | 235 | 153 | 125 | 62-74** | 106 | 9 | 4 | 24 | 61 | 58 | 103 | 100 | 117 | - | - | M20x1,5 |
| | MVSI 15/100-S02 | A | 249 (50Hz) 235 (60Hz) | 153 | 125 | 62-74** | 106 | 9 | 4 | 24 | 61 | 65 (50Hz) 58 (60Hz) | 103 | 100 | 117 | - | - | M20x1,5 |
| | MVSI 15/200-S02 | A | 301 | 179 | 152 | 90 | 125 | 13 | 4 | 28 | 73 | 77 | 127 | 128 | 141 | - | - | M20x1,5 |
| | MVSI 15/400-S02 | A | 344 | 203 | 167 | 105 | 140 | 13 | 4 | 30 | 82.5 | 93 | 145 | 140 | 160 | - | - | M25x1,5 |
| | MVSI 15/550-S02 | A | 386 | 203 | 167 | 105 | 140 | 13 | 4 | 30 | 82.5 | 114 | 145 | 140 | 160 | - | - | M25x1,5 |
| | MVSI 15/700-S02 | A | 394 | 216 | 205 | 120 | 170 | 17 | 4 | 45 | 93.5 | 106 | 170 | 160 | 182 | - | - | M25x1,5 |
| | MVSI 15/1100-S90 | A | 435 | 233 | 205 | 120 | 170 | 17 | 4 | 54 | 104.5 | 117.5 | 187 | 162 | 203 | - | - | M25x1,5 |
| | MVSI 15/1410-S90 | A | 448 | 246 | 230 | 140 | 190 | 17 | 4 | 54 | 116 | 108 | 210 | 180 | 225 | - | - | M25x1,5 |
| | MVSI 15/1710-S90 | A | 500 | 246 | 230 | 140 | 190 | 17 | 4 | 54 | 116 | 134 | 210 | 180 | 225 | - | - | M25x1,5 |
| | MVSI 15/2000-S90 | A | 568 | 246 | 230 | 140 | 190 | 17 | 4 | 54 | 116 | 168 | 210 | 180 | 225 | - | - | M25x1,5 |
| | MVSI 15/2410-S02 | A | 537 | 278 | 275 | 155 | 225 | 22 | 4 | 70 | 135 | 137 | 238 | 205 | 253 | - | - | M25x1,5 |
| | MVSI 15/3000-S02 | A | 617 | 278 | 275 | 155 | 225 | 22 | 4 | 70 | 135 | 177 | 238 | 205 | 253 | - | - | M25x1,5 |
| | MVSI 15/3810-S02 | A | 584 | 321 | 310 | 155 | 255 | 23.5 | 4 | 77 | 157 | 137 | 280 | 215 | 295 | - | - | M25x1,5 |
| | MVSI 15/4300-S02 | A | 666 (50Hz) 584 (60Hz) | 321 | 310 | 155 | 255 | 23.5 | 4 | 77 | 157 | 178 (50Hz) 137 (60Hz) | 280 | 215 | 295 | - | - | M25x1,5 |
| | MVSI 15/5010-S02 | A | 630 | 347 | 340 | 180 | 280 | 26 | 4 | 80 | 165 | 150 | 303 | 240 | 320 | - | - | M32x1,5 |
| | MVSI 15/7000-S02 | A | 680 | 370 | 390 | 200 | 320 | 28 | 4 | 90 | 180 | 160 | 330 | 270 | 350 | - | - | M32x1,5 |
| | MVSI 15/9000-S90 | A | 629 | 395 | 392 | 200 | 320 | 28 | 4 | 100 | 192 | 135 | 355 | 270 | 375 | - | - | M32x1,5 |
| | MVSI 15/9500-S02 | C | 862 | 437 | 460 | 125 | 380 | 38 | 6 | 35 | 215 | 230 | 387 | 320 | 414 | - | - | M32x1,5 |
| | MVSI 15/11500-S90 | C | 990 | 454 | 530 | 140 | 440 | 45 | 6 | 38 | 230 | 240 | 423 | 370 | 448 | - | - | M32x1,5 |
| MVSI 15/14500-S90 | C | 990 | 454 | 530 | 140 | 440 | 45 | 6 | 38 | 230 | 240 | 423 | 370 | 448 | - | - | M32x1,5 | |



| | | | | | | | | | | | | | | | | | | |
|--------------|-----------------|---|--------------------------|-----|-----|---------|-----|----|---|----|------|------------------------|-----|-----|-----|-------|--------|---------|
| single-phase | MVSI 15/35-S02 | A | 211 | 153 | 125 | 62-74** | 106 | 9 | 4 | 24 | 61 | 46 | 103 | 100 | 117 | 3.15 | 25 | M25x1,5 |
| | MVSI 15/80-S02 | A | 235 | 153 | 125 | 62-74** | 106 | 9 | 4 | 24 | 61 | 58 | 103 | 100 | 117 | 3.15 | 25 | M25x1,5 |
| | MVSI 15/100-S02 | A | 249 (50Hz) 235 (60Hz) | 153 | 125 | 62-74** | 106 | 9 | 4 | 24 | 61 | 65 (50Hz) 58 (60Hz) | 103 | 100 | 117 | 3.15 | 25 | M25x1,5 |
| | MVSI 15/200-S02 | A | 301 | 179 | 152 | 90 | 125 | 13 | 4 | 28 | 73 | 77 | 127 | 128 | 141 | 5 | 25 | M25x1,5 |
| | MVSI 15/400-S02 | A | 344 | 203 | 167 | 105 | 140 | 13 | 4 | 30 | 82.5 | 93 | 145 | 140 | 160 | 32/12 | 35 | M25x1,5 |
| | MVSI 15/550-S02 | A | 386 | 203 | 167 | 105 | 140 | 13 | 4 | 30 | 82.5 | 114 | 145 | 140 | 160 | 32/12 | 40/35 | M25x1,5 |
| | MVSI 15/700-S90 | A | 381 | 210 | 205 | 120 | 170 | 17 | 4 | 45 | 91.5 | 88 | 168 | 160 | 178 | 96/16 | 160/40 | M25x1,5 |

** Slot ◐ Start-up capacitor / Running capacitor.